

residential office public restoration industrial houses



project management
structural design
due diligence

there are no bad times just ...

WHO WE ARE

... different perspectives

- | Our company was founded in 2009 with the very well defined mindset: a **new approach** to construction projects based on the needs of the client.
- | at that time, the Romanian construction market was in severe decline. Despite the disadvantageous context, our focus on carefully **personalized and targeted solutions** helped us sustain a steady growth. Today we have a large portfolio of clients and we continue to expand.
- | The team is composed of experienced engineers trained to provide quality design, consulting and management services in the field of structural engineering. We managed to build a **solid experience** in different types of projects (commercial, industrial, residential, office spaces or public service).

associate ing. **Adrian Vasilescu**



*adrian@crossprojects.ro
0040.748.26.10.10*

associate ing. **Horia Miheea**



*horia@crossprojects.ro
0040.749.28.10.10*

for every problem there is a solution

WHAT WE

... or more

THINK

- | The main ideas we base our decisions on:
 - | It all begins with the perception the market has on the quality of the project. We need to protect it!
 - | All specialties are interconnected. We need to understand what governs those connections;
 - | The quantities are important as long as they are on time;
 - | The key to a successful project is understanding its uniqueness;
 - | It's our responsibility to step up to the architectural, safety and economical challenges;
 - | We enjoy each challenge;
- | We strongly believe that the design engineer cannot provide quality projects without fully understanding the unique aspects of each site, objective and investor

WHAT WE DO ... engineering

| Engineers are part of a team that works as a whole and because of that their presence and consultation is essential in all key points of the investment:

| **Investment opportunity;**

| **Prefeasibility study:** identifying vulnerabilities in the projects and impact assessment over the investment costs;

| **Feasibility study:** establishing clear performance and quality requirements of the projects and their integration into the design frame;

Develop investment budgets based on previously identified criteria;

Elaboration of project schedule;

Preparing specifications underlying the design stage;

| **Design Process:**

Constant follow-up of the project and compliance with quality and performance requirements;

Monitoring specifications implementation;

Controlling the consumption of materials and investment budgets set at the beginning of the project;

Compliance with the initial concept and project schedule;

one man's magic is another man's ...

WHAT WE DO ... engineering

- | **Execution phase:** aligning the offers received from contractors and establish clear payment terms;
Compliance of estimated costs and schedule of execution phase;
Tracking carefully all the activities on the critical path;
Preparing and supervising technical execution procedures to obtain the desired quality level;
- | **The completion and commissioning:**
Technical and financial audit of the project accompanied by recommendations for following investments.

We built our experience by accepting each challenge. In turn, these challenges shaped who we **ARE**, what we **THINK** and how we **DO** things.

CROSS PORTFOLIO

residential
office
public
restoration
industrial
houses

residential¹

office

public

restoration

industrial

houses



Radului Apartment Building | Bucharest

S+P+4 | 20 housing units
arch: KXL Architects
3.000 sqm | concrete frames



ACEK 1&2 Residential Quarter | Bucharest

S + P + 11 | 770 housing units
arch: KXL Architects
150.000 sqm | concrete frames



Ciresoia Apartment Buildings | Bucharest

S + P + 4 | 100 housing units
arch: KXL Architects
6.000 sqm | concrete frames



Golovita Apartment Building | Bucharest

S+P+2 | 3 housing units
arch: KXL Architects
400 sqm | concrete frames



Madrigalului Apartment Building | Bucharest

S+P+4 | 22 housing units
arch: KXL Architects
4.000 sqm | concrete frames



Docentilor Apartment Building | Constanta

S+P+5 | 17 housing units
arch: KXL Architects
4.320 sqm | central concrete tube and frames



Popa Nan Office & Apartment Building | Bucharest

D + P + 4 | 35 housing units + offices

arch: KXL Architects

3.000 sqm | rehabilitation of existing structure



Predeal Residential Quarter | Predeal, jud. Brasov

P + 2 | 10 housing units

arch: KXL Architects

800 sqm | concrete frames



The Park Residential Quarter | Bucharest

S + D + P + 11 | 104 housing units

arch: KXL Architects

37.000 sqm | concrete frames & concrete reinforced walls



Pridvorului Residential Quarter | Bucharest

2S + P + 14 | 359 housing units

arch: KXL Architects

35.000 sqm | concrete frames & concrete reinforced walls



Eugen Brode Residential Quarter | Bucharest

P + 4 | 60 housing units

arch: KXL Architects

6.000 sqm | concrete reinforced walls



American Village Residential Quarter | Bucharest

S + P + 5 | 104 housing units

arch: KXL Architects

25.000 sqm | concrete reinforced walls

residential

office

public

restoration

industrial

houses



Regional Business Centre | Pitesti

3S+P+11 | 3S+P+3 | 3S+P+1
arch: Radu & Lauster | Mihai Radu Architects
27.000 sqm | concrete frames



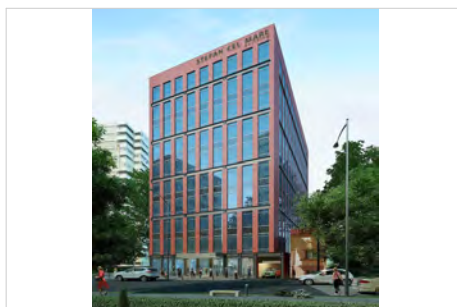
Iuliu Tetrat 11 Office Building | Bucharest

historic building preservation & S + P + 5
arch: KXL Architects
5.000 sqm | concrete frames



Sevastopol 19A Office Building | Bucharest

insertion in historical urban site | 2S + P + 7
arch: KXL Architects
6.300 sqm | concrete frames



Tunari 60A Office Building | Bucharest

3S+P+10
arch: Radu & Lauster | Mihai Radu Architects
13.000 sqm | concrete frames + central concrete tube



Viitorului 115 Office Building | Bucharest

S+P+7
arch: KXL Architects
3.000 sqm | concrete frames + concrete walls



Plevnei 228A Office Building | Bucharest

S + P + 4 + 5r
arch: KXL Architects
1200 sqm | concrete reinforced walls

residential

office

public¹

restoration

industrial

houses



L.A.S. Sports Hall | Leysin, Switzerland

S + P + 1

arch: KXL Architects

2.500 sqm | steel structure



"C-tin Brancusi" Cultural Center | Targu Jiu

insertion in historical urban site | P

arch: Radu & Lauster | Mihai Radu Architects

1.000 sqm | concrete frames



"Parada" Street Children Care Centre | Paris

pro bono project | P + 1

arch: KXL Architects

560 sqm | concrete frames

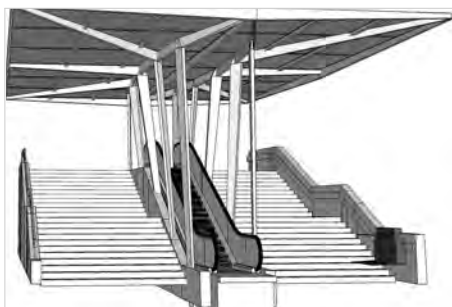


Public School | Branesti, Romania

arch: KXL Architects

2.000 sqm

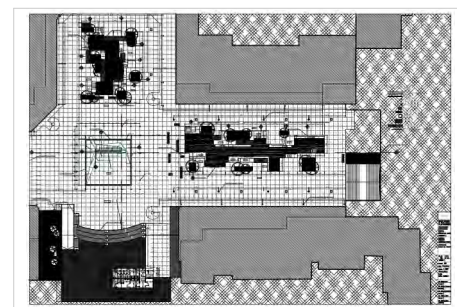
rehabilitation of the existing structure + steel structure



Urban Public Space | Roman

arch: LEF Proiect

30.000 sqm | steel structures



Urban Public Space | Roman

arch: LEF Proiect

30.000 sqm | steel structures

residential

office

public²

restoration

industrial

houses



Aqua Park indoor swimming pool | Craiova

arch: IDP Project
constructor: POLYSTART
12.000 sqm | concrete structure



Mega Mall Comercial Center | Bucharest

steel design for facade elements and skylights | 4S
arch: Andrei Lefter | Lef Project
200.000 sqm | steel structure



Multistory Public Parking | Brasov

insertion in protected urban site | 4S
arch: KXL Architects
10.000 sqm | concrete walls



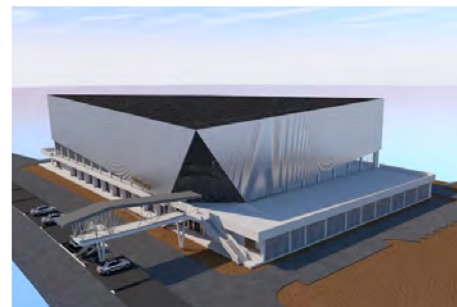
Park Lake Comercial Center | Bucharest

steel design for facade elements and skylights | 3S
arch: Alpha Studio
constructor: Strabag
70.000 sqm | steel structure



A.N.A.F Administrative Building | Pitesti

structural evaluation and restoration of existing building | 10S
arch: Tr Studio
20.000 sqm | concrete frames



Pitesti Sports Hall | Pitesti

public sports hall | 3S
arch: TR Studio
6.000 sqm | steel frames and reinforced concrete walls

residential

office

public

restoration

industrial

houses

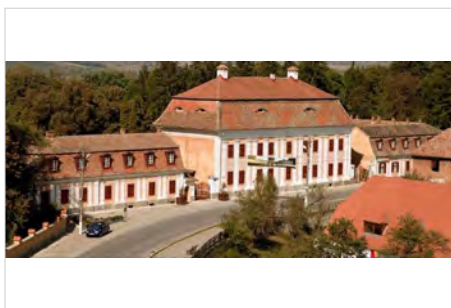


City Hall | Slatina

S+P+1

arch: KXL Architects

250 sqm | concrete frames

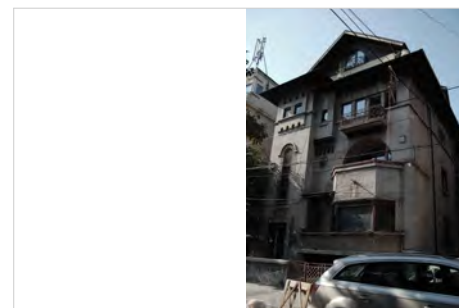


Baroque summer residence of baron
Samuel von Brukenthal | Avrig, jud. Sibiu

18th century buildings | historical monument | S+P+1+M

arch: Arhimus

intervention: seismic dampers + carbon fiber sheets



Porumbaru House | Bucharest

1930s historical monument | S+P+2 + M

arch: Radu & Lauster | Mihai Radu Architects

2.000 sqm



Cinema Victoria | Slatina

S + P + 1

arch: KXL Architects

1000 sqm

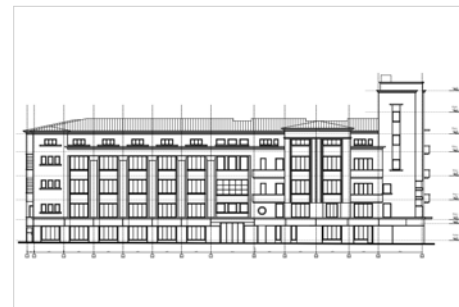


Police Station | Slatina

Ds + P + M

arch: KXL Architects

150 sqm



Popa Nan Residential | Bucharest

S+ P+4+2 [increased height] | 35 housing units

arch: KXL Architecture

5.000 sqm | concrete frames + steel structure

residential

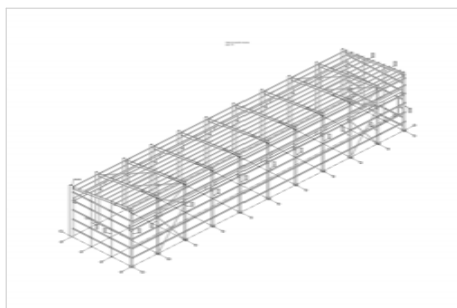
office

public

restoration

industrial

houses



Various Industrial Warehouses | Romania

P, P+1

partners: Martifer Construc iones

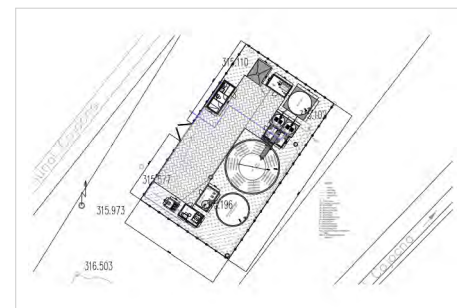
400 sqm - 5.000 sqm | steel frames



Various Solar Plants | Romania

partners: Omitech Design

1 - 3 MW



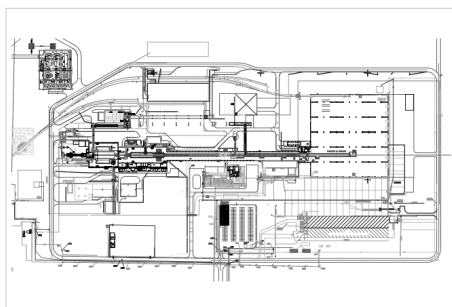
Various Water Treatment Plant | Romania

partners: FEBOS



Sun Flower Seed Processing Factory | Lehliu

partners: PRIO Extractii



Saint-Gobain Glass Factory | Calarasi

partners: Martifer Construc iones



Geplast Factory | Bucharest

P+1

arch: K-OPS

2.000 sqm | steele frames

residential

office

public

restoration

industrial

houses ¹



Roberto House | Bucharest

S+P+1

arch: KXL Architects

500 sqm | concrete frames + concrete walls



Horia House | Bucharest

S+P+1

arch: KXL Architects

500 sqm | concrete walls + steel trusses



Marian House | Bucharest

S + P + 1

arch: KXL Architects

500 sqm | concrete frames + concrete walls + steel frames



Harry House | Bucharest

P+1

arch: 360 Architecture

120 sqm | concrete frames



Giurgiu House | Giurgiu

P+1

arch: LEF Proiecty

1800 sqm | concrete frames



Farcasiu House | Deva

P+1

arch: Irina Marinescu + Diana Mihnea

300 sqm | concrete frames

residential

office

public

restoration

industrial

houses ²



Heliu House | Bucharest

P+1

arch: Omnitech Design

250 sqm | concrete frames



Vasilescu House | Popesti-Leordeni, Romania

P+1

arch: KLX Architects

350 sqm | concrete frames



Ciolacu House | Cocani, Dambovit

P

arch: Diana Mihnea

200 sqm | concrete frames + timber structure



Mogosoia House | Bucharest

P+1

arch: Point Zero

200 sqm | concrete frames + masonry



Costea House | Bucharest

P+1

arch: Diana Mihnea

200 sqm | concrete frames



Crevedia House | Crevedia, Romania

P+1

arch: Robert Stefan

180 sqm | concrete frames